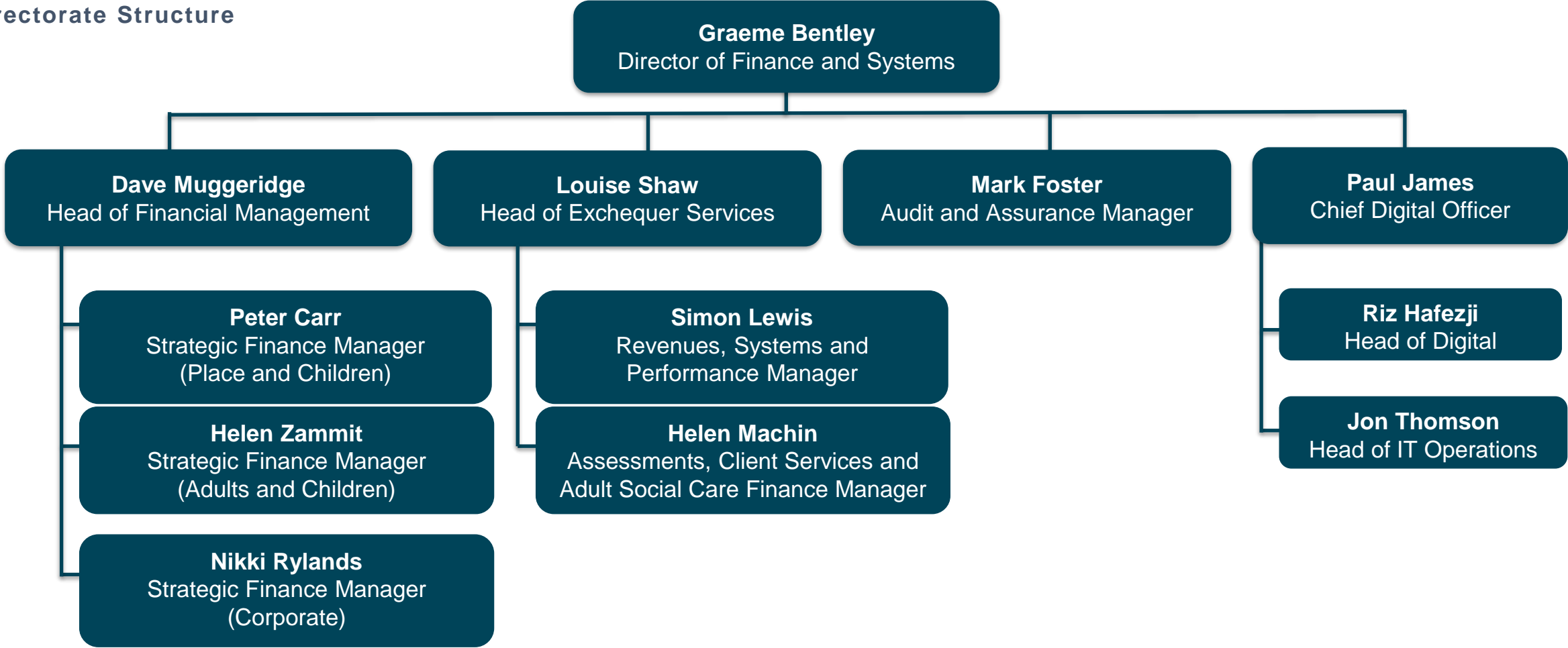


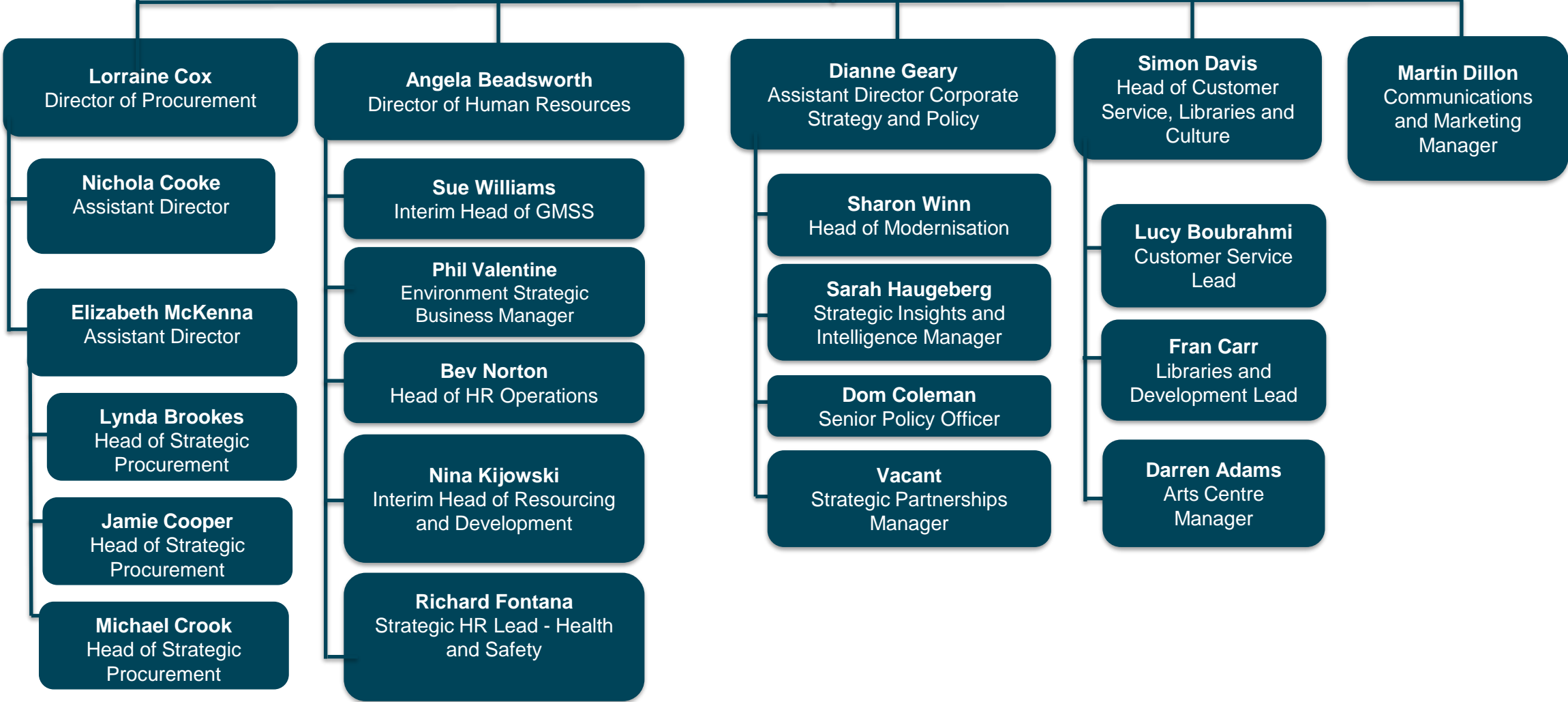
Directorate Structure



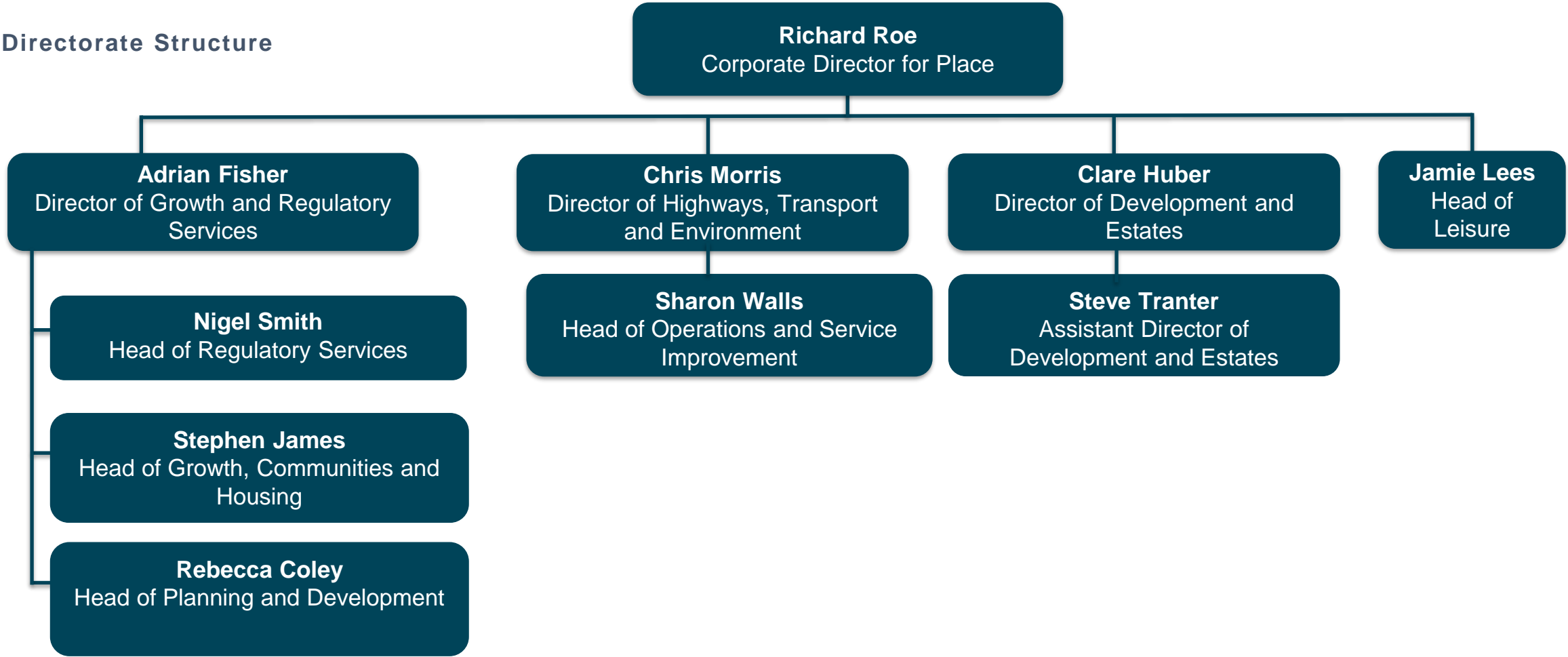
Directorate Structure

Sara Saleh
Deputy Chief Executive
Corporate Director, Strategy and Resources

Total headcount for Directorate: 975



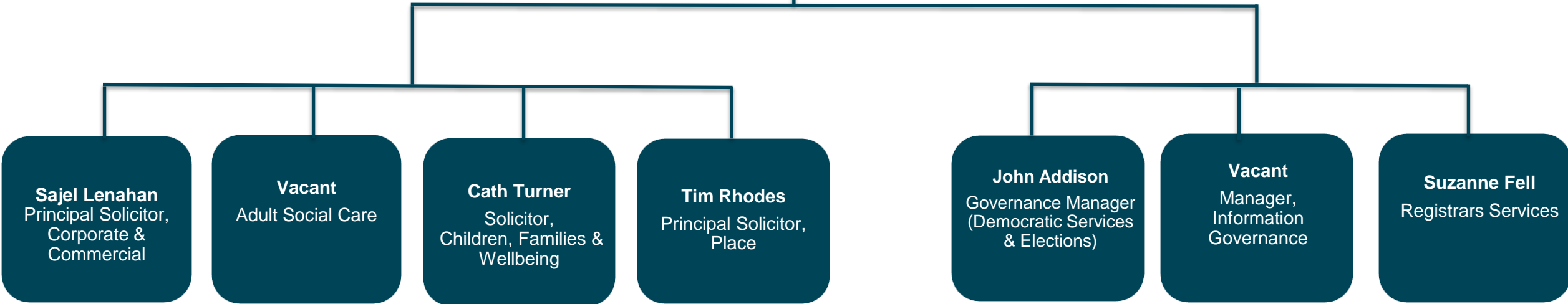
Directorate Structure

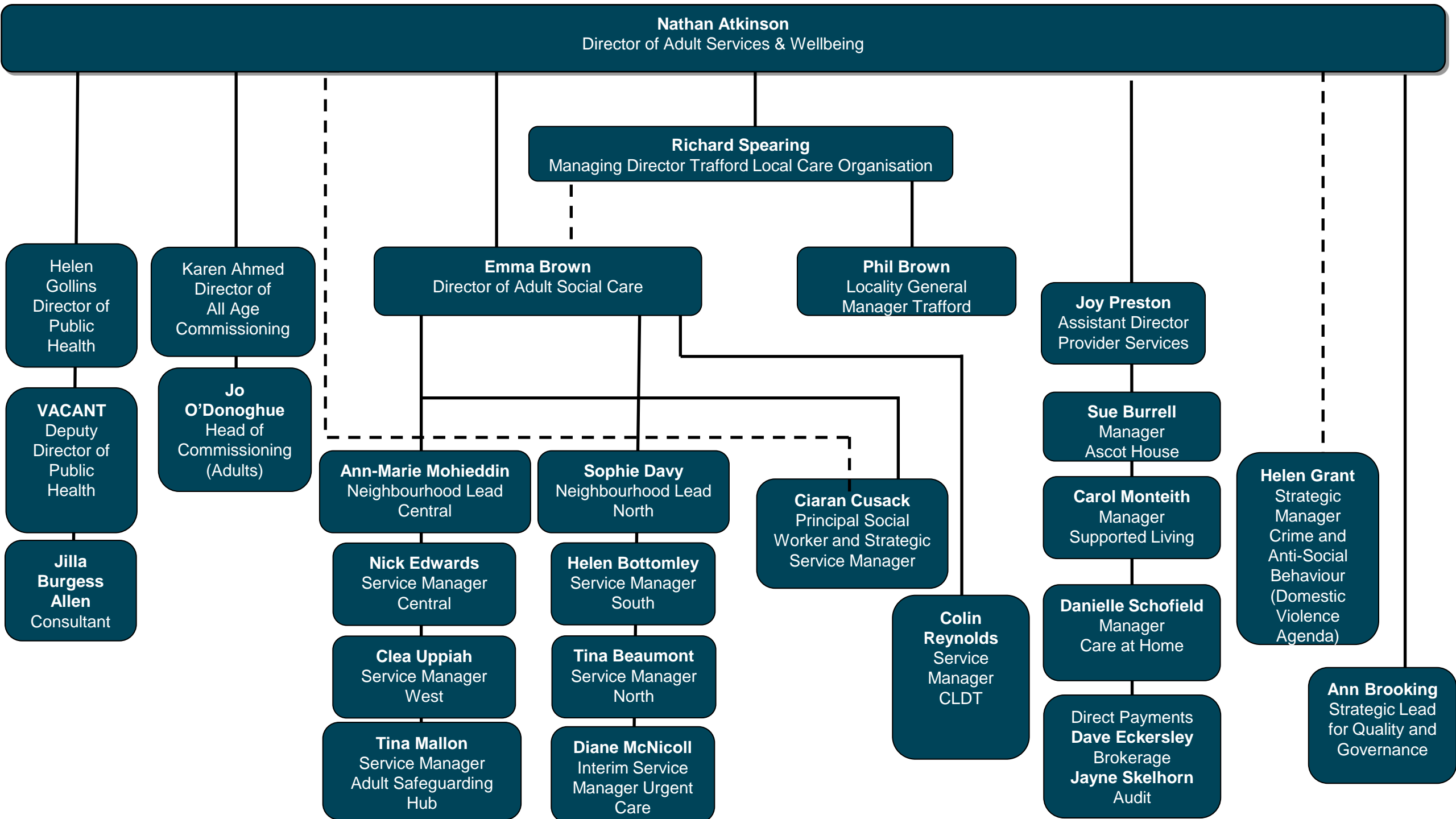


Legal & Governance

Dominique Sykes
Director of Legal and Governance

Emma Malpas
Head of Legal and Governance





Nathan Atkinson
Director of Adult Services & Wellbeing

Richard Spearing
Managing Director Trafford Local Care Organisation

Emma Brown
Director of Adult Social Care

Phil Brown
Locality General Manager Trafford

Karen Ahmed
Director of All Age Commissioning

Jo O'Donoghue
Head of Commissioning (Adults)

Joy Preston
Assistant Director Provider Services

Sue Burrell
Manager Ascot House

Carol Monteith
Manager Supported Living

Danielle Schofield
Manager Care at Home

Direct Payments
Dave Eckersley
Brokerage
Jayne Skelhorn
Audit

Helen Grant
Strategic Manager Crime and Anti-Social Behaviour (Domestic Violence Agenda)

Ann Brooking
Strategic Lead for Quality and Governance

Helen Gollins
Director of Public Health

VACANT
Deputy Director of Public Health

Jilla Burgess Allen
Consultant

Ann-Marie Mohieddin
Neighbourhood Lead Central

Nick Edwards
Service Manager Central

Clea Uppiah
Service Manager West

Tina Mallon
Service Manager Adult Safeguarding Hub

Sophie Davy
Neighbourhood Lead North

Helen Bottomley
Service Manager South

Tina Beaumont
Service Manager North

Diane McNicoll
Interim Service Manager Urgent Care

Ciaran Cusack
Principal Social Worker and Strategic Service Manager

Colin Reynolds
Service Manager CLDT

Children's Services

Corporate Director of Children's Services
Jill McGregor

Director of Education Standards, Quality and Performance
Karen Samples

Director of Early Help & Children's Social Care
Pamela Wharton

Virtual Head Teacher
Lynsey Burridge

Designated Social Care Officer (DSCO)
Justin Colman

Complex Needs Team Practice Manager
Theresa Dearn

Strategic Lead Safeguarding
Tony Morrissey

Strategic Lead Practice Improvement and Learning
Jude Brown

Primary School Improvement Adviser
Vacant

Secondary School Improvement Adviser
Jane Bryan

Interim Principal Educational Psychologist
Andrew Byrne

Head of Service Cared 4 and Care Experienced Service
Tracey Arnold

Head of Service Provider Services
Glen Perryman

Head of Service Vulnerable Adolescent Service
Tracey Staines

Interim Head of Inclusion Service
Sally Smith

Head of Access, Admissions & Early Years Service
Sarah Butters

Head of Service & Advisor for Vulnerable Children
Karen McCallum

Head of Service Early Help Locality Service and First Response
Rachel Carter-Brown

Head of Service Families First (Child in Need) Locality Service
Elaine Harvey

Head of Service Support and Protection Locality Service
Jean Mawdsley